

Melody/C Instruments

Bar'chu

Commissioned by Cantor Diane Yomtov
Congregation Beth Am - Buffalo Grove, IL

Ben Siegel

Arranged by Joel N. Eglash

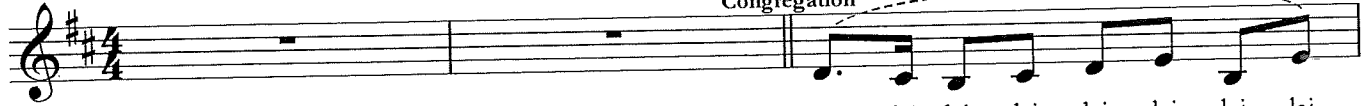
With Movement ♩ = 100

Bm Em F#7 Bm

AM Bm

DM Em

Congregation



1. Lai lai lai lai lai lai lai lai
2. Ba - - - - -

AM Bm

AM

AG Asus4

C D F#7



lai. ruch

Lai lai lai lai lai lai lai lai lai
A - - - - - do - nai

AM Bm

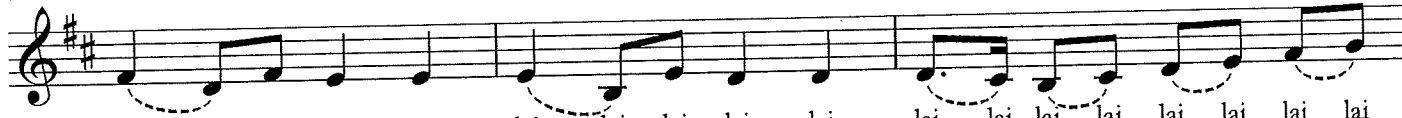
D E

DM Em

AM Bm

AM BM

G A-Asus4 A



Lai lai lai lai lai, lai lai lai lai lai, lai lai lai lai lai
ha - m' - vo - rach, ha - m' - vo - rach l' - o - lam - va -

C D

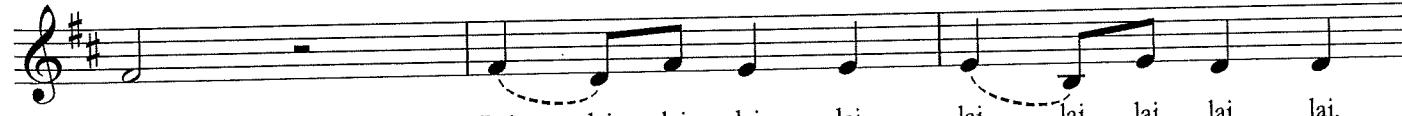
E7 F#7

AM Bm

D E

DM Em

AM Bm



lai. -ed, Lai lai lai lai lai, lai lai lai lai lai,
ha - m' - vo - rach, ha - m' - vo - rach

AM

DM Em

E7 F#7

AM Bm

DM Em

AM BM

Fine

Freely



lai lai lai lai lai lai lai lai lai.
l' - o - lam - va - ed. Cantor: Ba - r' -

AM

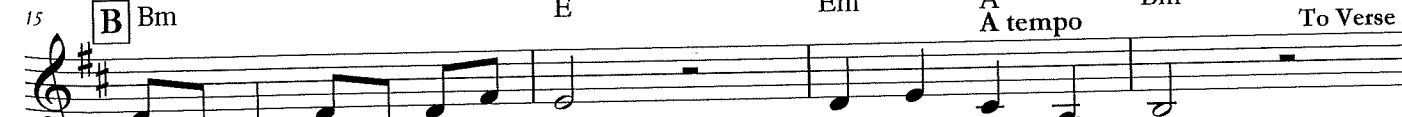
D E

DM Em

G A tempo

AM Bm

D.S. al Fine To Verse 2



chu et A - do - nai ha - m' - vo - rach.

B Bm

15